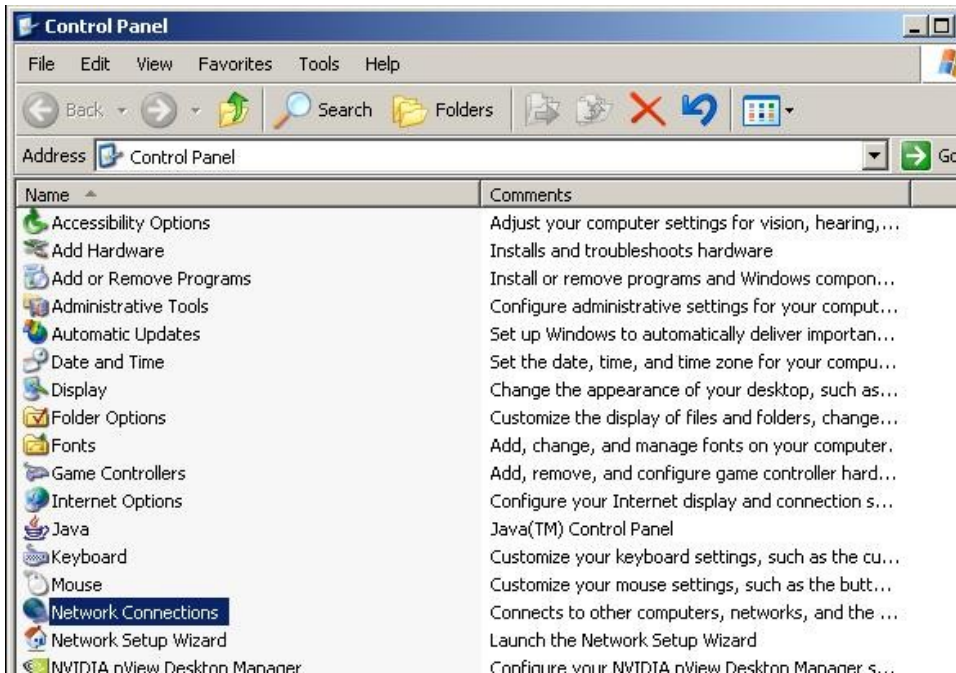


Omsoft Technologies & Tandem Properties DSL setup instructions for Windows Vista/XP/2000



All versions of Windows are set up to use DHCP connections out of the box, but in the event that anything on your computer has been changed, here's how to make sure that your computer will be ready to make DHCP connections over the Omsoft provided DSL circuit.

Click on the **START** button, and open the **Control Panel**, then

double click on **Network Connections** in order to open the proper control panel:



Once in **Network Connections**, locate the icon for your ethernet card. This is usually under the **LAN or High-Speed Internet** section. At this point you should right-click on the icon for the **Local area Connection**, and click on **Properties** from the pop up menu:

With the **Properties** open, highlight **Internet Protocol (TCP/IP)** then click on the **Properties** button.

Make sure that the radio buttons for the TCP/IP properties are both set to **Obtain an IP address automatically** and **Obtain DNS server address automatically**.

Click **OK**.

This will return you to the **Local Area Connection properties** pane. Click **OK**.

The configuration of your computer for use with DHCP is now complete.